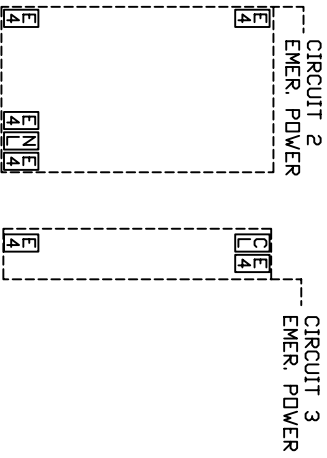
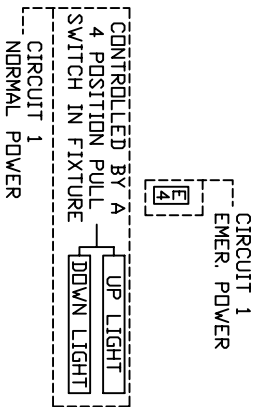
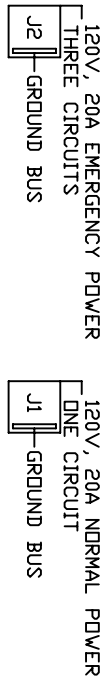


**NOTES:**

- ① JUNCTION BOXES: J1--NORMAL POWER, J2--EMERGENCY POWER, J3--NURSE CALL/CODE BLUE, J4--TELEPHONE.
- ② GAS PIPING: TYPE L COPPERTUBING: OXYGEN AND AIR--1/2" I.D., VACUUM--3/4" I.D.
- ③ PANEL LAMINATE COLOR: TO BE DETERMINED.
- ④ CONDUIT: C1--MONITOR (1-1/4")



WIRING DIAGRAM

GROUND WIRING TO BE #10  
GREEN STRANDED COPPER

\*AFF: ABOVE FINISHED FLOOR



**MODULAR** 109 N. E. 38TH STREET  
**SERVICES COMPANY** OKLAHOMA CITY, OK. 73105

PROJECT

REVISED

FULL LENGTH SPECIAL  
CARE MODULAR HEADWALL  
MODEL 4401

SCALE: 1" = 1'

DATE: 03/21/05 DRAWN BY: DRAWING # PB-156

SERVICES TO BE REVERSED  
ON OPPOSITE HAND UNITS

MEDIUM ACUITY

-- REQ'D: -- AS SHOWN  
-- OPPOSITE

