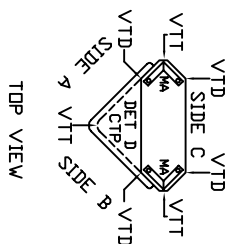
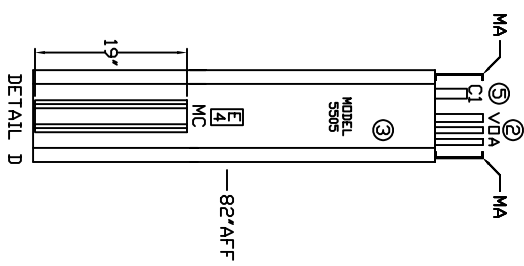
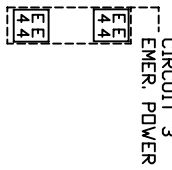
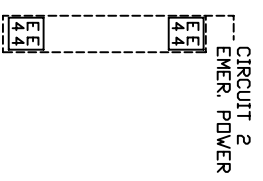


NOTES:

- ① JUNCTION BOXES: J1--NORMAL POWER, J2--EMERGENCY POWER, J3--NURSE CALL/CODE BLUE/TELEPHONE.
- ② GAS PIPING: TYPE L COPPER TUBING. OXYGEN & AIR--1/2" I.D., VACUUM--3/4" I.D.
- ③ PANEL COLOR: POWDER COATED FINISH THAT MATCHES FORMICA #923 'SURF'.
- ④ COUNTERTOP COLOR: TO BE DETERMINED.
- ⑤ CONDUIT: C1--MONITOR (1-1/4") 120V, 20A EMERGENCY POWER THREE CIRCUITS
J2
GROUND BUS



WIRING DIAGRAM
GROUND WIRING TO BE #10 GREEN STRANDED COPPER.

MODULAR 109 N. E. 38TH STREET
SERVICES COMPANY OKLAHOMA CITY, OK. 73105

PROJECT

REVISED

MINI MULTI-DIMENSIONAL™
COLUMN
5501

SCALE: 1" = 1'

DATE: 03/21/05
DRAWN BY: PB-135

