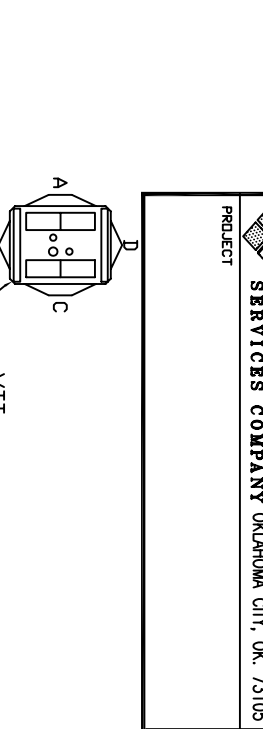


NOTES:

- ① JUNCTION BOXES: J1--NORMAL POWER, J2--EMERGENCY POWER, J3--NURSE CALL/CODE BLUE, J4--TELEPHONE.
- ② GAS PIPING: TYPE L COPPER TUBING. OXYGEN & AIR--1/2" I.D., VACUUM--3/4" I.D.
- ③ PANEL COLOR: POWDER COATED FINISH THAT MATCHES FORMICA #923 'SURF'.
- ④ CONDUIT: C1--MONITOR (1-1/4")



MODULAR SERVICES COMPANY 109 N. E. 38TH STREET
OKLAHOMA CITY, OK. 73105

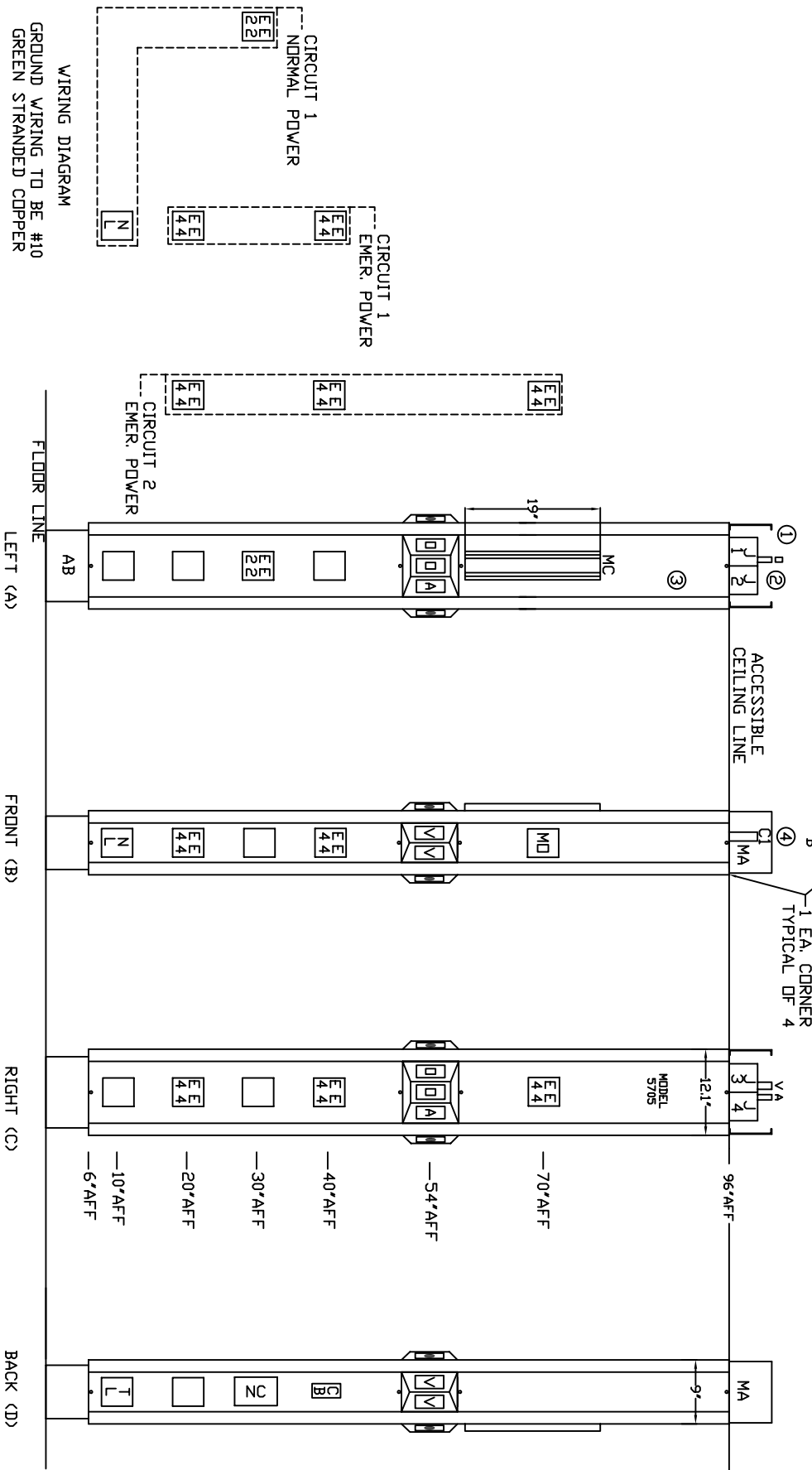
PROJECT: **MODULAR SERVICES COMPANY**

REVISED

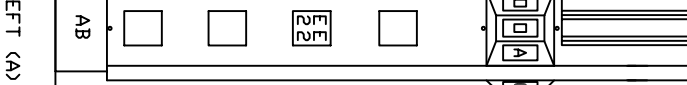
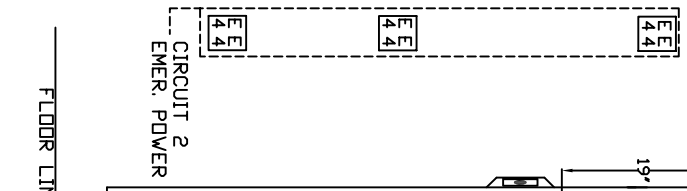
MIDI TOWER™
MODEL 5705

SCALE: 1" = 1'

DATE: 03/21/05 DRAWN BY: PB-141



WIRING DIAGRAM
GROUND WIRING TO BE #10
GREEN STRANDED COPPER



FLOOR LINE
LEFT (A)
FRONT (B)
RIGHT (C)
BACK (D)

96' AFF
12.1'
9'

--- REQ'D: --AS SHOWN
--OPPOSITE

MEDIUM/HIGH ACUITY

*AFF (ABOVE FINISHED FLOOR)

