

NOTES:

- ① JUNCTION BOXES: J1--NORMAL POWER, J2--EMER. POWER, J3--TELEPHONE.
- ② GAS PIPING: TYPE L COPPERTUBING, OXYGEN & AIR--1/2" I.D., VACUUM--3/4" I.D.
- ③ COLOR TO MATCH FORMICA #923 'SURF'.
- ④ CEILING HEIGHT: 7/6' MIN TO 9/6' MAX. OTHER HEIGHTS ARE SUBJECT TO AN ADDTL. CHARGE. CONTACT YOUR SALES REPRESENTATIVE FOR DETAILS.
- ⑤ MAXIMUM CONDUIT SIZE FOR DOUBLE-SIDED UNITS IS 3/4".

SERVICES TO BE REVERSED
ON OPPOSITE HAND UNITS

MODULAR SERVICES COMPANY 109 N. E. 38TH STREET
OKLAHOMA CITY, OK. 73105

PROJECT

REVISED

PROFILE™ UNIT
SINGLE SIDED, SEMI-RECESSED
DUAL GAS POD
MODEL 7011-A

SCALE: 1" = 1'

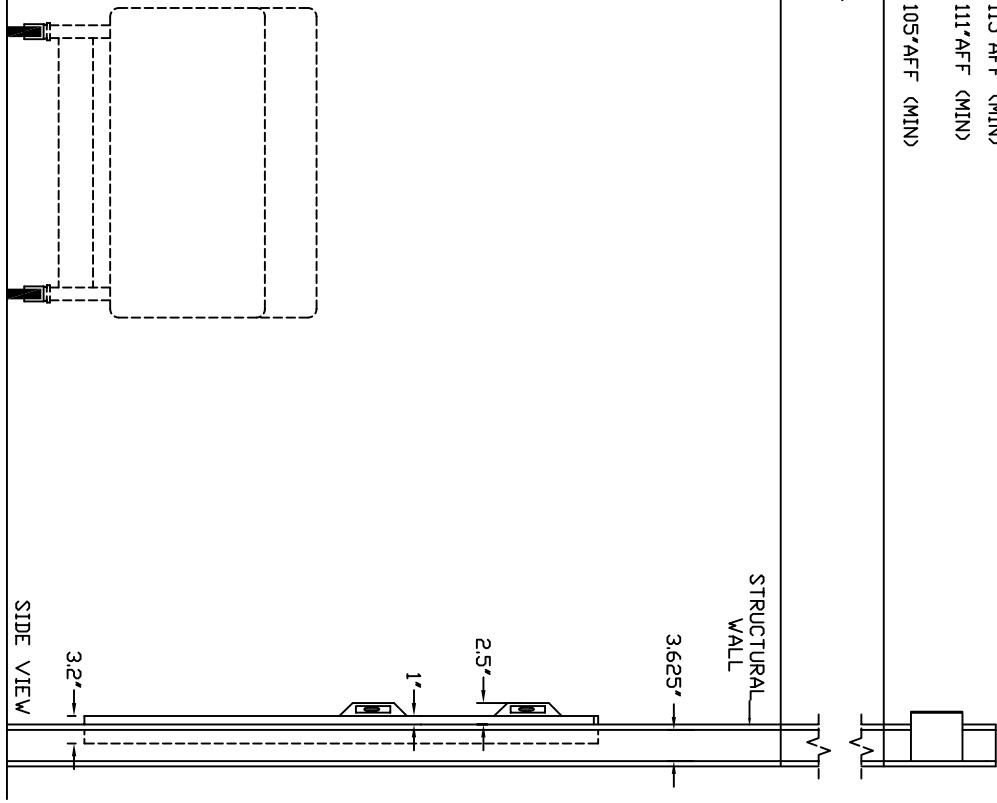
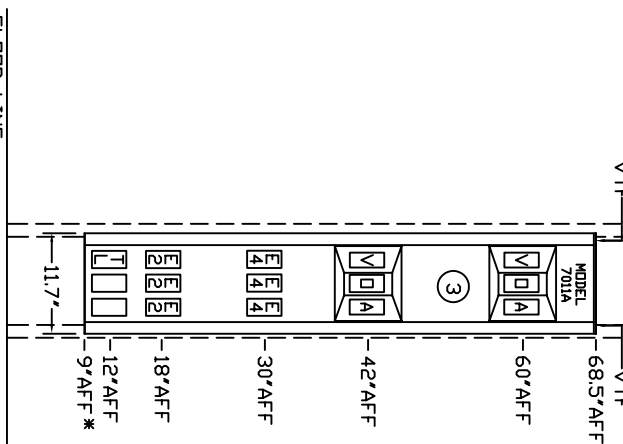
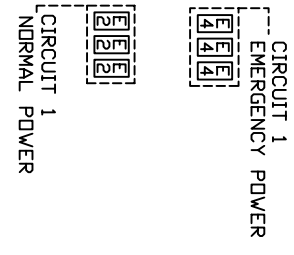
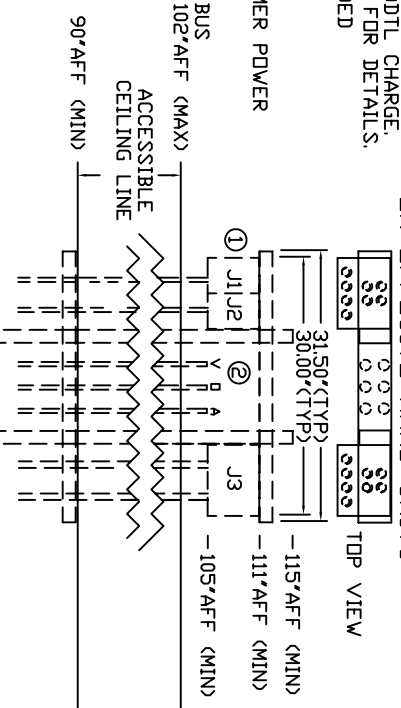
DATE: 03/21/05 DRAWN BY: DRAWING # PB-109

120V, 20A NORMAL POWER
ONE CIRCUIT

120V, 20A EMER. POWER
ONE CIRCUIT

GROUND BUS J1

GROUND BUS J2



WIRING DIAGRAM
GROUND WIRING TO BE #10
GREEN STRANDED COPPER

FLOOR LINE

*AFF(ABOVE FINISHED FLOOR)

SIDE VIEW

