

NOTES:

- ① JUNCTION BOXES: J1--NORMAL POWER, J2--EMERGENCY POWER, J3--TELEPHONE.
- ② GAS PIPING: TYPE L COPPER TUBING. OXYGEN & AIR-- $\frac{1}{2}$ " I.D., VACUUM-- $\frac{3}{4}$ " I.D.
- ③ ALL POWDER COATED SURFACES WILL MATCH FORMICA #923 "SURF".
- ④ ALL INTERIOR STUD FRAMING IS TO FIT A $\frac{3}{8}$ " METAL STUD WALL WITH A $\frac{5}{8}$ " GYPSUM BOARD FINISH.
- ⑤ EMT CONDUIT: C1--MONITOR OUTPUT (1 $\frac{1}{2}$ "), CEILING HEIGHT 7'6" MIN TO 9'6" MAX OTHER HEIGHTS ARE SUBJECT TO AN ADDITIONAL CHARGE. CONTACT YOUR SALES REPRESENTATIVE FOR DETAILS.



MODULAR SERVICES COMPANY
 109 N. E. 38TH STREET
 OKLAHOMA CITY, OK. 73105

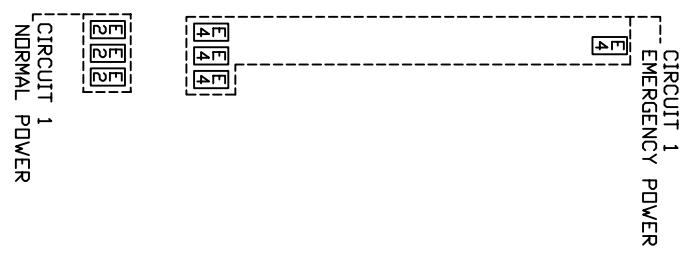
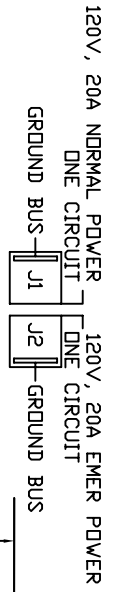
REVISED

JUMBO PROFILE™ UNIT
 SINGLE SIDED, SEMI-RECESSED
 DUAL GAS PDD
 MODEL 7111 - A

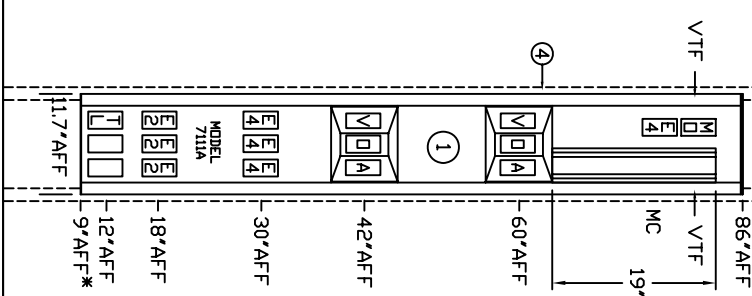
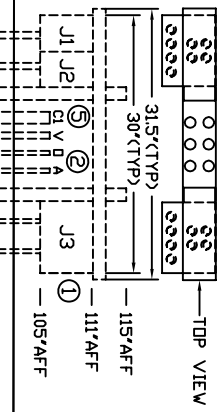
SCALE: 1" = 1'
 DATE: 03/21/05
 DRAWN BY: DRAWING # PB-113

MEDIUM ACUITY

-- REQ'D.
 -- AS SHOWN
 -- OPPOSITE



WIRING DIAGRAM
 GROUND WIRING TO BE #10
 GREEN STRANDED COPPER



* AFF (ABOVE FINISHED FLOOR)

FLOOR LINE

STRUCTURAL WALL

SIDE VIEW

