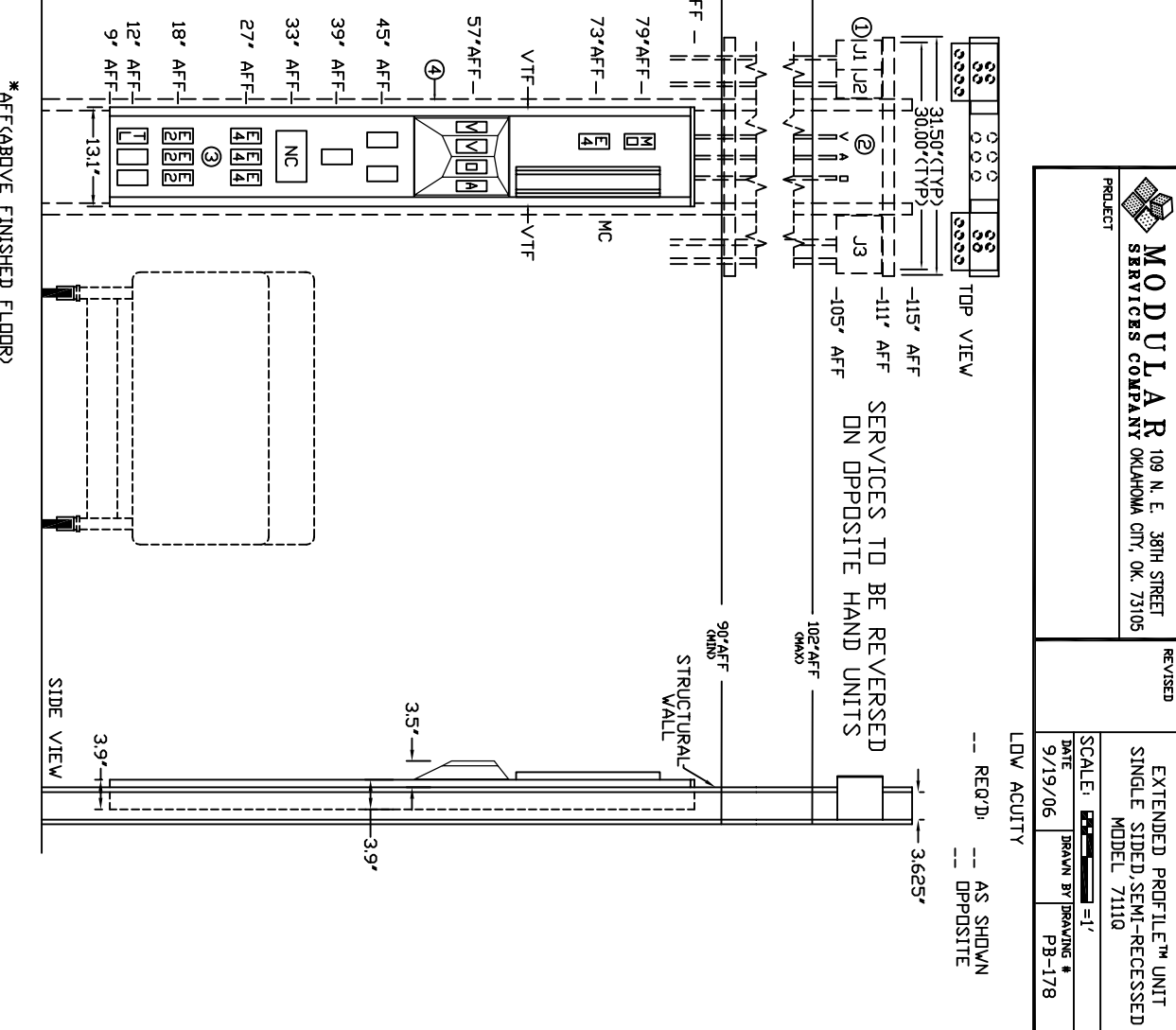
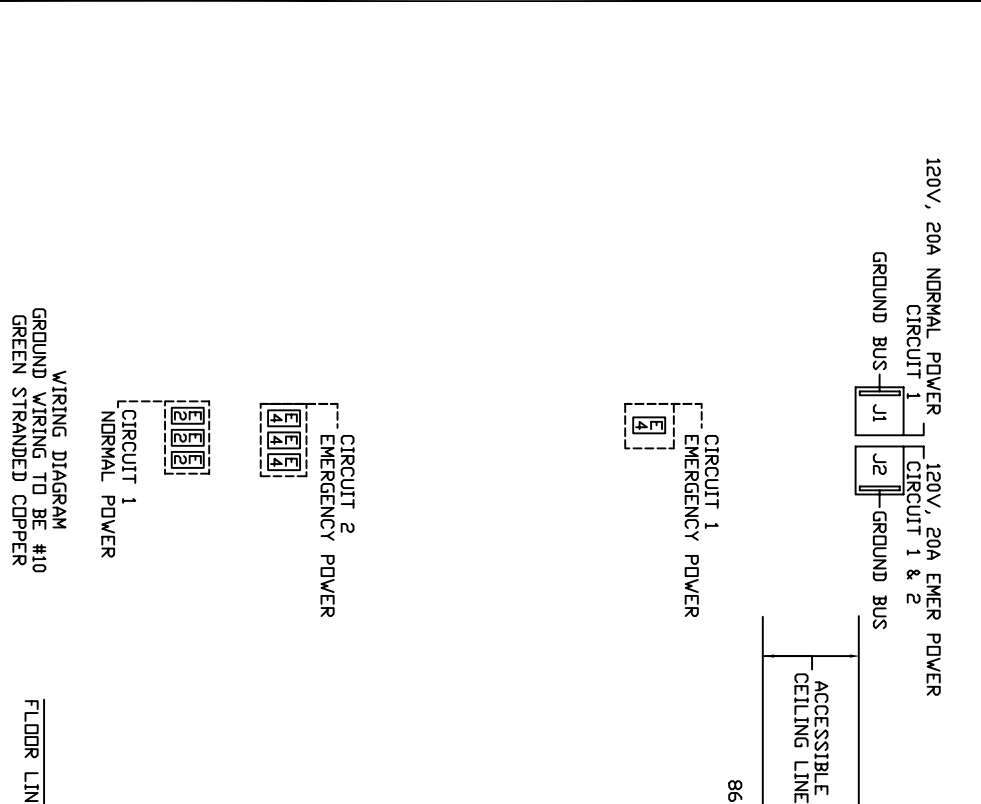


NOTES:

- ① JUNCTION BOXES: J1--NORMAL POWER, J2--EMERGENCY POWER, J3--NURSE CALL/TELEPHONE.
- ② GAS PIPING: TYPE L COPPER TUBING. OXYGEN & AIR-- $\frac{1}{2}$ " ID, VACUUM-- $\frac{3}{4}$ " ID.
- ③ ALL POWDER COATED SURFACES WILL MATCH FORMICA #923 "SURF".
- ④ ALL INTERIOR STUD FRAMING IS TO FIT A $3\frac{3}{8}$ " METAL STUD WALL WITH A $\frac{3}{8}$ " GYPSUM BOARD FINISH.
- ⑤ EMT CONDUIT: C1--MONITOR OUTPUT (1 $\frac{1}{2}$ "), CEILING HEIGHT: 7'6" MIN. TO 9'6" MAX. OTHER HEIGHTS ARE SUBJECT TO AN ADDITIONAL CHARGE. CONTACT YOUR SALES REPRESENTATIVE FOR DETAILS.



MODULAR 109 N. E. 38TH STREET
SERVICES COMPANY OKLAHOMA CITY, OK. 73105

REVISED

EXTENDED PROFILE™ UNIT
SINGLE SIDE/SEMI-RECESSED
MODEL 7111Q

PROJECT	DATE	DRAWN BY	DRAWING #
	9/19/06		PB-178

SCALE: $\frac{1}{8}'' = 1'$
DATE: 9/19/06
DRAWN BY: [blank]
DRAWING #: PB-178

SERVICES TO BE REVERSED
DN OPPOSITE HAND UNITS

LOW ACUITY
-- RECD: -- AS SHOWN
-- OPPOSITE

*AFFABOVE FINISHED FLOOR