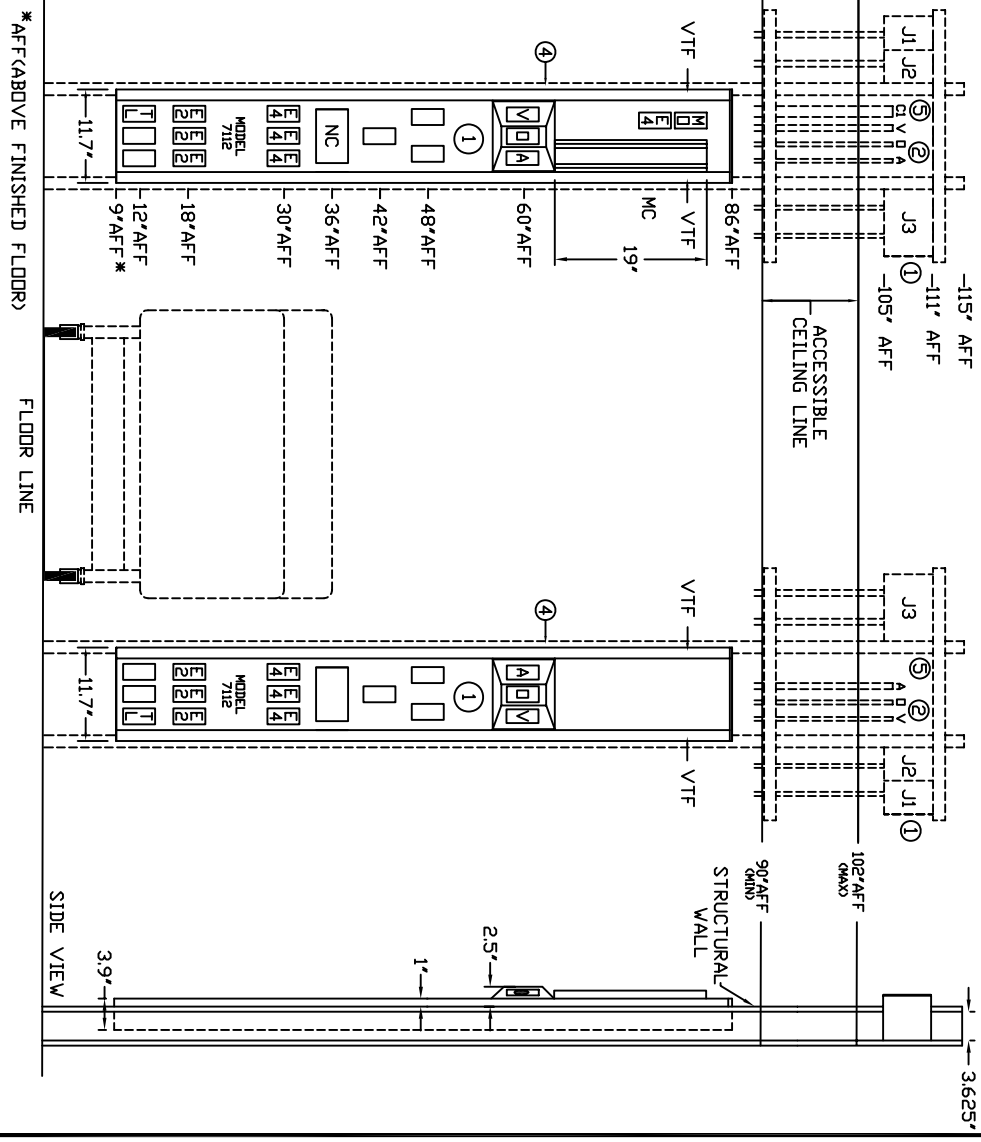
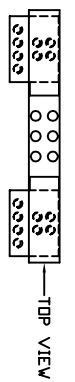
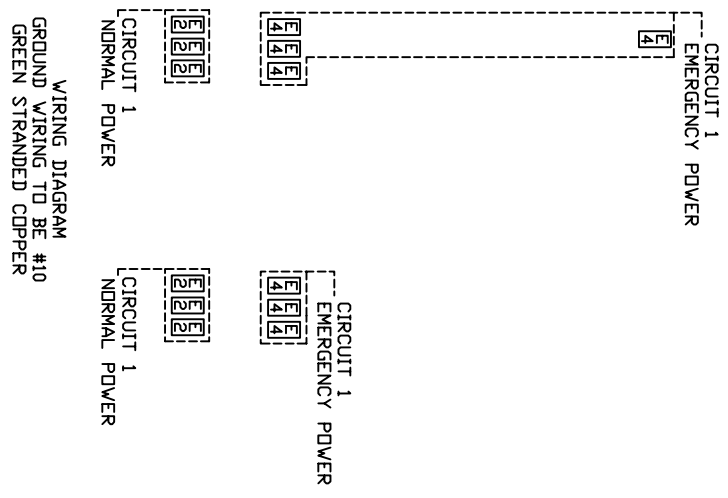
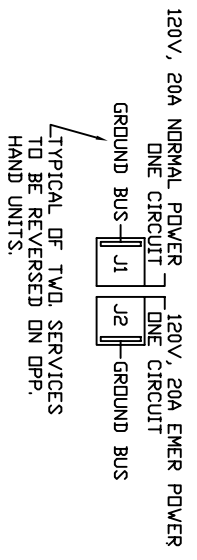


- NOTES:**
- ① JUNCTION BOXES: J1--NORMAL POWER, J2--EMERGENCY POWER, J3--NURSE CALL/TELEPHONE.
 - ② GAS PIPING: TYPE L COPPER TUBING. OXYGEN & AIR-- $\frac{1}{2}$ " I.D., VACUUM-- $\frac{3}{4}$ " I.D.
 - ③ ALL POWDER COATED SURFACES WILL MATCH FORMICA #923 "SURF".
 - ④ ALL INTERIOR STUD FRAMING IS TO FIT A 3 $\frac{3}{8}$ " METAL STUD WALL WITH A $\frac{3}{8}$ " GYPSUM BOARD FINISH.
 - ⑤ EMT CONDUIT: C1--MONITOR OUTPUT (1 $\frac{1}{2}$ "), CEILING HEIGHT 7'6" MIN TO 9'6" MAX OTHER HEIGHTS ARE SUBJECT TO AN ADDITIONAL CHARGE
 - ⑥ CONTACT YOUR SALES REPRESENTATIVE FOR DETAILS.



MODULAR SERVICES COMPANY		109 N. E. 38TH STREET OKLAHOMA CITY, OK. 73105
PROJECT	REVISED	EXTENDED PROFILE™ UNIT SINGLE SIDED, SEMI-RECESSED MODEL 7112
DATE 03/21/05	DRAWN BY PB-114	SCALE: = 1'
MEDIUM ACUITY		RECD: AS SHOWN DPPPOSITE

