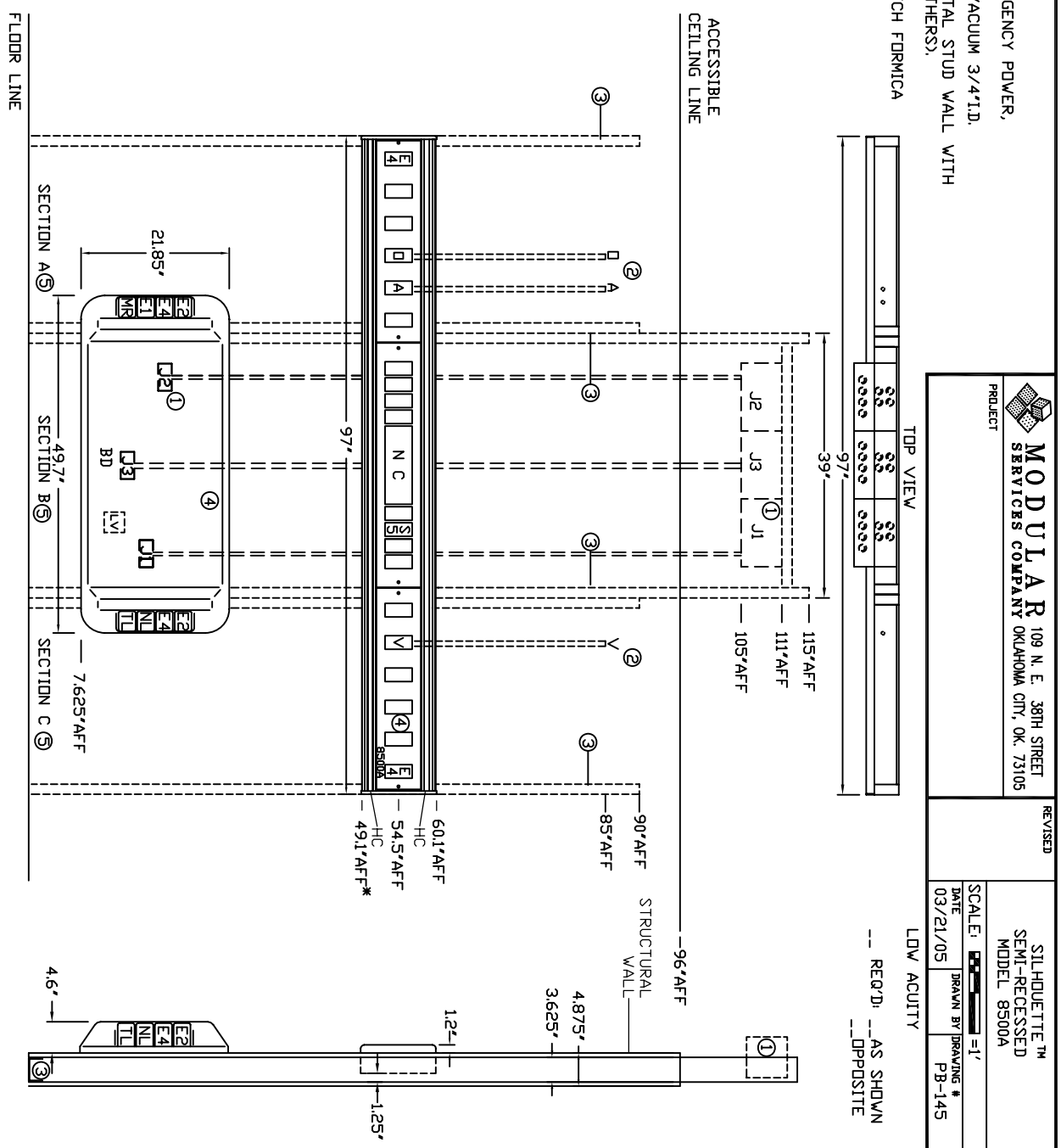


**NOTES:**

- ① JUNCTION BOXES: J1--NORMAL POWER, J2--EMERGENCY POWER, J3--NURSE CALL/TELEPHONE/MULTI PIN.
- ② MEDICAL GAS PIPING: OXYGEN & AIR--1/2" I.D., VACUUM 3/4" I.D.
- ③ INTERIOR STUD FRAMING IS TO FIT A 3-5/8" METAL STUD WALL WITH ONE LAYER OF 5/8" GYPSUM BOARD FINISH (BY OTHERS).
- ④ PANEL LAMINATE COLOR TO BE DETERMINED. POWDER COATED & KYDEX SURFACES ARE TO MATCH FORMICA #923 "SURF".
- ⑤ EMERGENCY POWER, NORMAL POWER, AND LDV VOLTAGE FIELD CONNECTIONS ARE REQUIRED BETWEEN SECTIONS A&B AND B&C.

SEE DRAWING LEG145 FOR WIRING DIAGRAM AND NOTES.



**MODULAR** 109 N. E. 38TH STREET  
SERVICES COMPANY OKLAHOMA CITY, OK. 73105

REVISED

SILHOUETTE™  
SEMI-RECESSED  
MODEL 8500A

SCALE: 1" = 1'  
DATE: 03/21/05  
DRAWN BY: DRAWING # PB-145

LDV ACUTITY

-- REQ'D: AS SHOWN  
-- OPPOSITE

