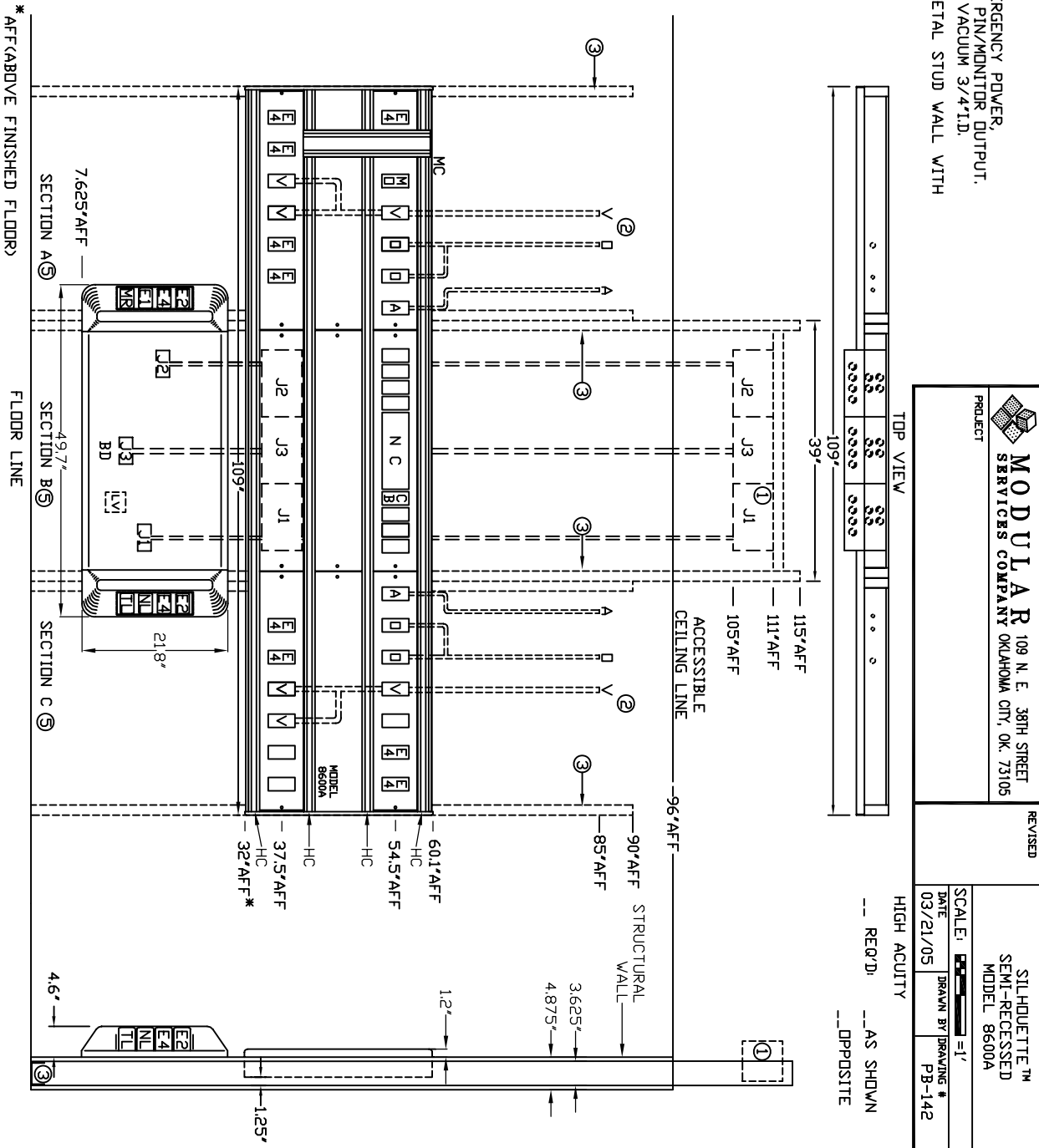


- NOTES:**
- ① JUNCTION BOXES: J1--NORMAL POWER, J2--EMERGENCY POWER, J3--NURSE CALL/CODE BLUE/TELEPHONE/MULTI PIN/MONITOR OUTPUT.
  - ② MEDICAL GAS PIPING: OXYGEN & AIR--1/2"ID, VACUUM 3/4"ID.
  - ③ INTERIOR STUD FRAMING IS TO FIT A 3-5/8" METAL STUD WALL WITH ONE LAYER OF 5/8" GYPSUM BOARD FINISH. PANEL LAMINATE COLOR: TO BE DETERMINED. POWDER COATED & KYDEX SURFACES ARE TO MATCH FORMICA #923 "SURF".
  - ④ EMERGENCY POWER, NORMAL POWER, AND LOW VOLTAGE FIELD CONNECTIONS ARE REQUIRED BETWEEN SECTIONS A&B AND B&C.

SEE DRAWING LEG142 FOR WIRING DIAGRAM AND NOTES.



**MODULAR** 109 N. E. 38TH STREET  
SERVICES COMPANY OKLAHOMA CITY, OK. 73105

REVISED

SILHOUETTE™  
SEMI-RECESSED  
MODEL 8600A

SCALE: 1" = 1'  
DATE: 03/21/05  
DRAWN BY: PB-142

HIGH ACUITY  
-- RECD: -- AS SHOWN  
-- OPPOSITE

\* AFF (ABOVE FINISHED FLOOR)



**MODULAR SERVICES COMPANY** 109 N. E. 38TH STREET  
OKLAHOMA CITY, OK. 73105

PROJECT

REVISED

SILHOUETTE™  
SEMI-RECESSED  
MODEL 8600A

SCALE: 1" = 1'

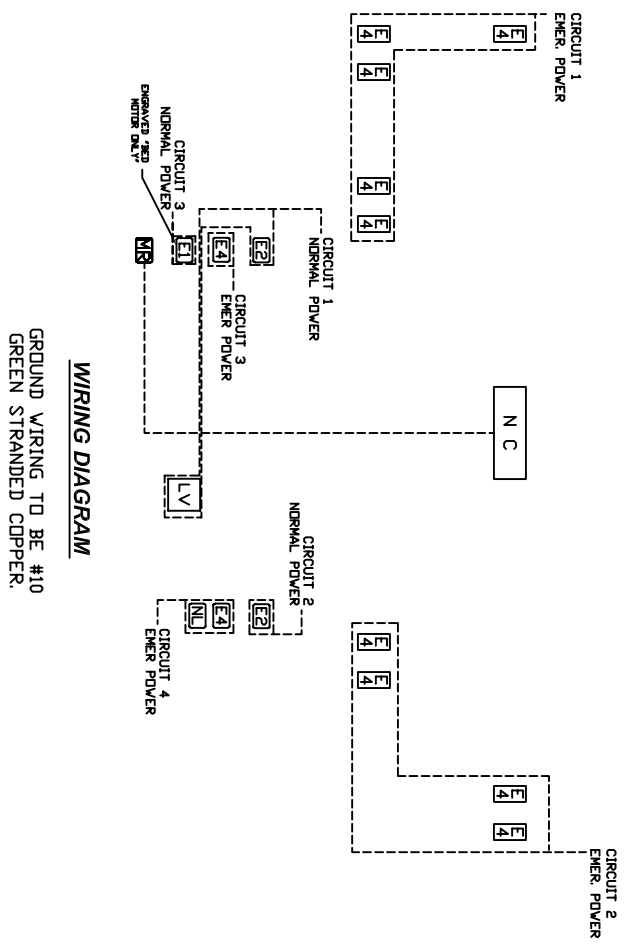
DATE: 03/21/05 DRAWN BY: LEG142

**LEGEND**

REQ	SYM	DESCRIPTION
4	D	OXYGEN OUTLET
2	A	AIR OUTLET
6	V	VACUUM OUTLET
1	E1	SINGLE RECEPTACLE, 8310 TYDRY, 20A, 125V, H.G., NORMAL POWER
11	E4	DUPLEX RECEPTACLE, 8300 RED, 20A, 125V, H.G., EMER. POWER
2	E2	DUPLEX RECEPTACLE, 8300 TYDRY, 20A, 125V, H.G., NORMAL POWER
1	NC	NURSE CALL PROVISION
1	CB	CODE BLUE PROVISION
1	MD	MONITOR OUTPUT PROVISION
4	HC	HORIZONTAL ACCESSORY CHANNEL
1	BD	BED DOCKER
1	TL	TELEPHONE OUTLET
1	MR	SINGLE CAT 5, RJ-45 RECEPTACLE
1	NL	MULTI-PIN BED RECEPTACLE
1	MC	37 PIN CONNECTOR W/CABLE
1	MC	NIGHT LIGHT, SIERRA 2156, FACE 4 WATT, 115V, LOUVERED
1	LV	MONITOR CHANNEL ONLY 19" LONG
1	LV	LOW VOLTAGE SWITCHING PACKAGE

120V, 20A EMERGENCY POWER  
FOUR CIRCUITS  
GROUND BUS—J2

120V, 20A NORMAL POWER  
THREE CIRCUITS  
GROUND BUS—J1



**WIRING DIAGRAM**

GROUND WIRING TO BE #10  
GREEN STRANDED COPPER.