
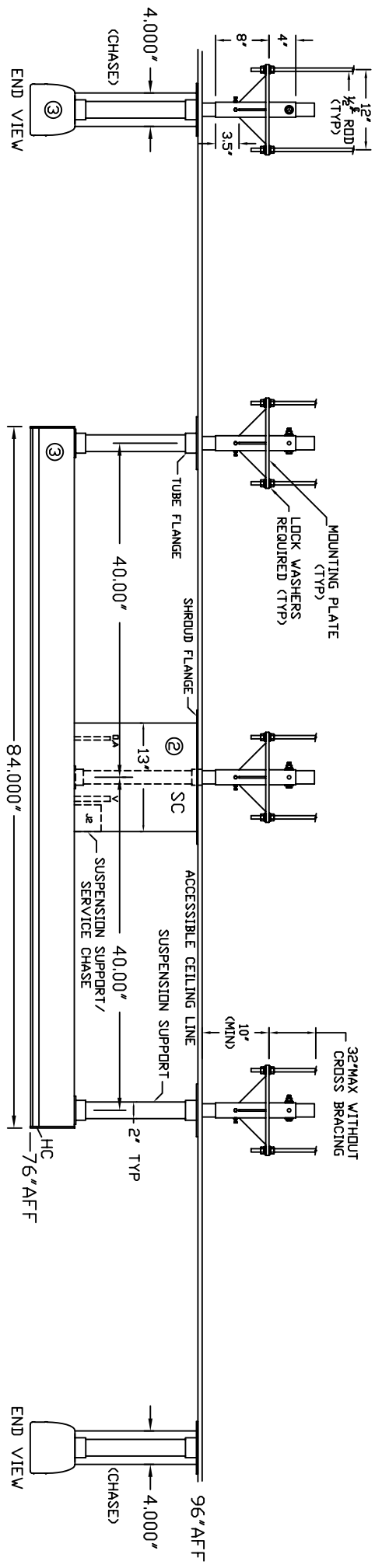
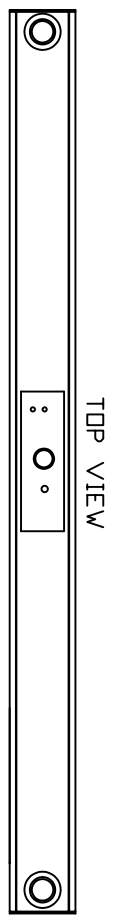


- NOTES:
- ① JUNCTION BOXES: J2--EMERGENCY POWER.
 - ② GAS PIPING: TYPE L COPPERTUBING. OXYGEN AND AIR--1/2" I.D., VACUUM--3/4" I.D.
 - ③ POWDER COATED FINISH TO MATCH FORMICA #923 "SURF".


MODULAR SERVICES COMPANY 109 N. E. 38TH STREET
 OKLAHOMA CITY, OK. 73105

REVISED
 CEILING WORKS™
 CIRBUS MODEL

SCALE: NOT TO SCALE
 DATE: 03/21/05 DRAWN BY: DRAWING # PB-164



FOOT END

BOTTOM VIEW

HEAD END



WIRING DIAGRAM
 GROUND WIRING TO BE # 10
 GREEN STRANDED COPPER



