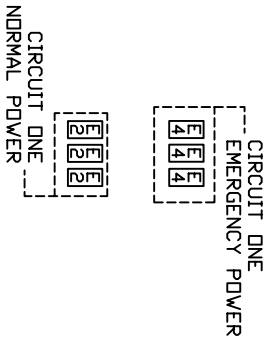
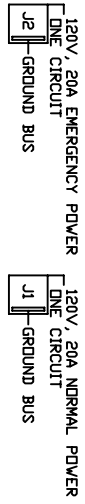


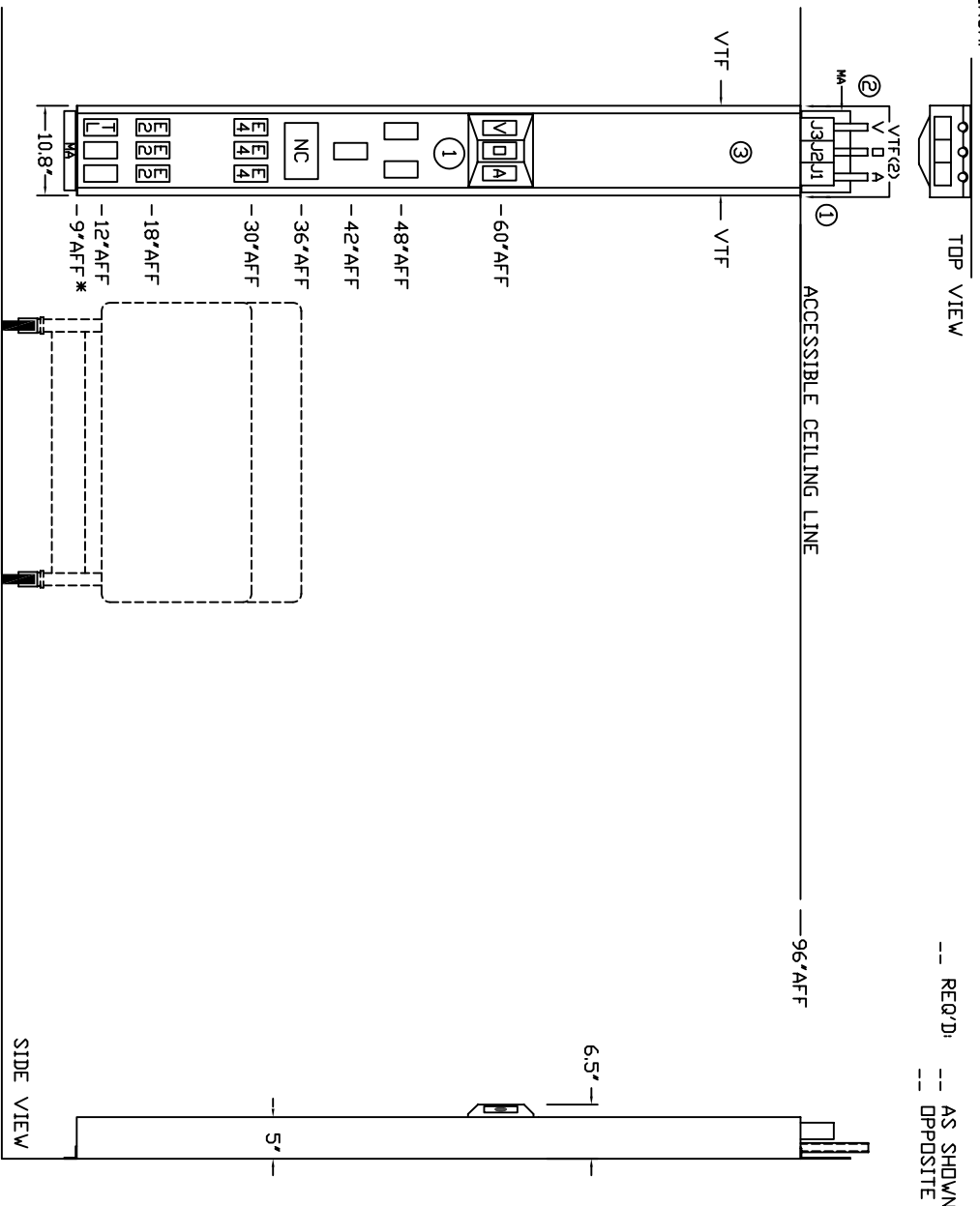
NOTES:

- ① JUNCTION BOXES: J1--NORMAL POWER, J2--EMERGENCY POWER, J3--NURSE CALL/TELEPHONE.
- ② GAS PIPING: TYPE L COPPERTUBING. OXYGEN AND AIR--1/2" I.D., VACUUM--3/4" I.D.
- ③ ALL POWDER COATED SURFACES TO MATCH FORMICA #923 'SURF'. (DEVICE MOUNTING PANELS AND FACE PLATES). VERTICAL TRACKS AND SIDE FRAMING MEMBERS ARE TO BE CLEAR ANODIZED ALUMINUM.



WIRING DIAGRAM
 GROUND WIRING TO BE #10
 GREEN STRANDED COPPER

| | |
|--|--|
| <p>MODULAR SERVICES COMPANY 109 N. E. 38TH TERRACE OKLAHOMA CITY, OK. 73105</p> | PROJECT |
| | REVISED |
| <p>PROFILE™ UNIT (SP) SURFACE MOUNT</p> | <p>SCALE: = 1'</p> <p>DATE: 03/21/05 DRAWN BY: DRAWING # PB-150</p> |



-- REQ'D: -- AS SHOWN
 -- OPPOSITE

* AFF (ABOVE FINISHED FLOOR)

