

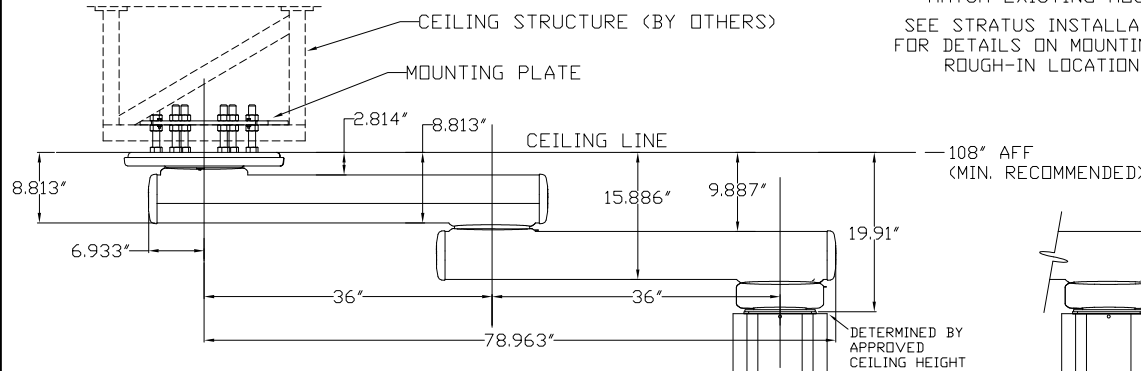
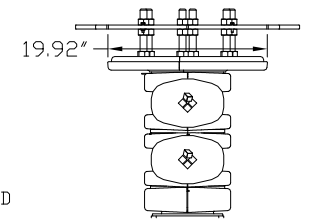
**NOTE:**

- ① GAS OUTLETS TO BE MSC STANDARD BRAND OUTLET WITH CONNECTION TO MATCH EXISTING HOSPITAL EQUIPMENT

SEE STRATUS INSTALLATION INSTRUCTIONS FOR DETAILS ON MOUNTING COMPONENTS AND ROUGH-IN LOCATION REQUIREMENTS

-- REQ'D: --- AS SHOWN  
--- OPPOSITE

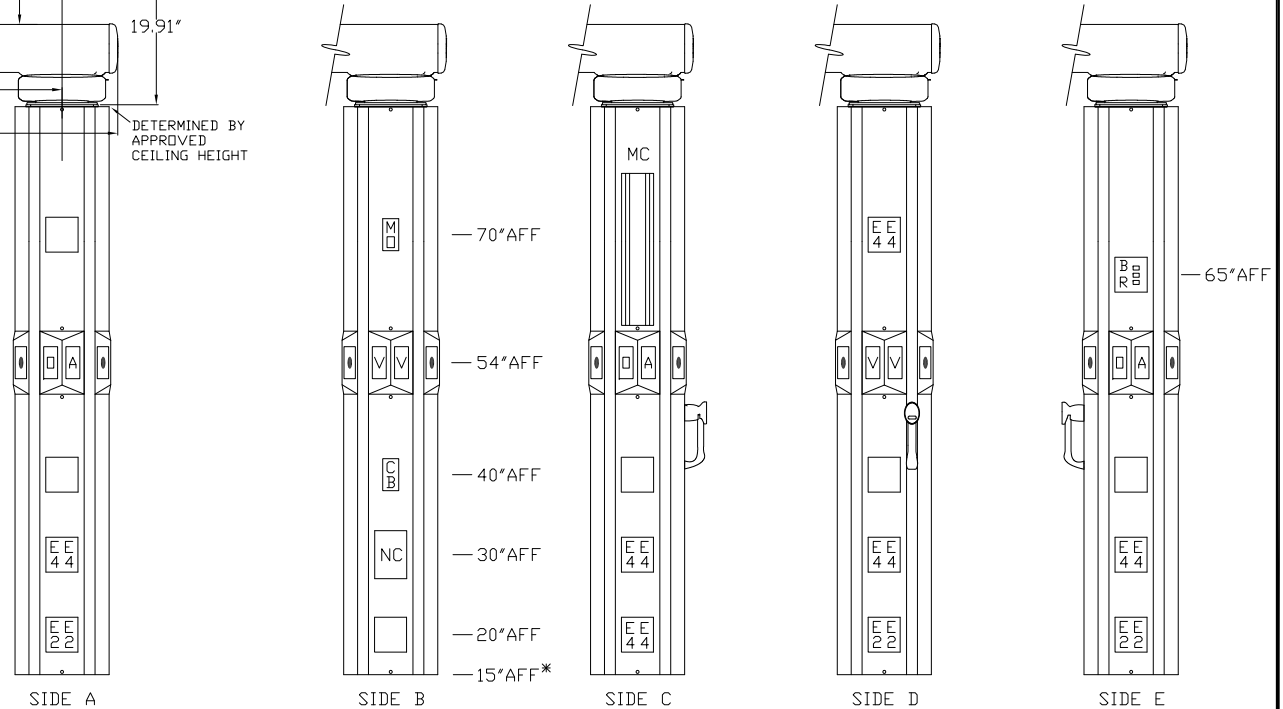
VTF  
1 EA. CORNER  
TYPICAL OF 5



DETERMINED BY APPROVED CEILING HEIGHT

**LEGEND**

REQ	SYM	DESCRIPTION
3	□	OXYGEN OUTLET
3	A	AIR OUTLET
4	V	VACUUM OUTLET
6	E2	DUPLEX RECEPTACLE, 8300 IVORY, 20A, 125V, H.G., NORMAL POWER
12	E4	DUPLEX RECEPTACLE, 8300 RED, 20A, 125V, H.G., EMER. POWER
1	NC	NURSE CALL PROVISION
1	CB	CODE BLUE PROVISION
1	MD	MONITOR OUTPUT PROVISION
1	MC	MONITOR CHANNEL ONLY
1	BR	BRAKE RELEASE
5	VTF	VERTICAL EQUIPMENT MOUNTING TRACK, FASCIA



FLOOR LINE